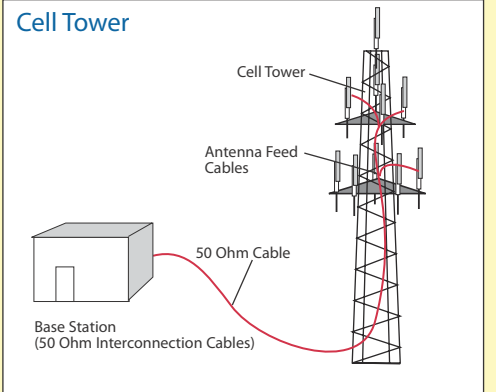
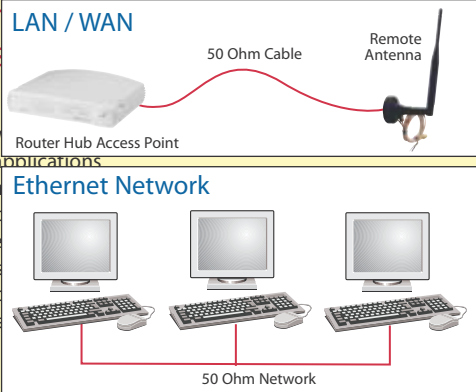




Tip When is 50 Ohm coaxial cable used?

The primary use of a 50 Ohm coaxial cable is the transmission of a data signal in a telecommunications system. Some common applications for 50 Ohm coaxial cable are computer backbones, wireless antenna feed cables (Global Positioning Satellite) antenna feed cables and cell phone systems. The cable assemblies offered in this section cover the most common style cables and connector interfaces that are used in these applications.



Item #	Description
--------	-------------

RG174/U - 50 Ohm Coaxial Cables with SMA and BNC Connectors and Molded Strain Relief Boots

L-com now offers 50 Ohm, SMA RG174/U coaxial cable assemblies with rugged molded strain relief boots that protect against severe cable bends at the cable/connector egress point. This new L-com exclusive RG174/U molded boot design is a hard to find feature that most coaxial cable manufacturers do not offer. Additionally, L-com stocks 10 standard lengths from .5 to 10 ft ready for immediate delivery.

RG174/U	NOMINAL ATTENUATION		
	MHz	db/100 ft	db/100m
50	5.8	19.0	
100	8.4	27.6	
200	12.5	41.0	
400	19.0	62.3	
1000	34.0	111.5	

RG174/U - 50 Ohm Coaxial Cables with Two Inline SMA Plugs and Molded Strain Relief Boots

- CC174S-05 RG174 Cable, SMA Male / Male, 0.5 ft
- CC174S-1 RG174 Cable, SMA Male / Male, 1.0 ft
- CC174S-1.5 RG174 Cable, SMA Male / Male, 1.5 ft
- CC174S-2 RG174 Cable, SMA Male / Male, 2.0 ft
- CC174S-2.5 RG174 Cable, SMA Male / Male, 2.5 ft
- CC174S-3 RG174 Cable, SMA Male / Male, 3.0 ft
- CC174S-4 RG174 Cable, SMA Male / Male, 4.0 ft
- CC174S-5 RG174 Cable, SMA Male / Male, 5.0 ft
- CC174S-7.5 RG174 Cable, SMA Male / Male, 7.5 ft
- CC174S-10 RG174 Cable, SMA Male / Male, 10.0 ft

RG174/U - 50 Ohm Coaxial Cables with Inline SMA to Right Angle SMA Plugs & Molded Strain Relief Boots

- CC174S-05HR RG174 Cable, SMA Male / 90° Male, 0.5 ft
- CC174S-1HR RG174 Cable, SMA Male / 90° Male, 1.0 ft
- CC174S-1.5HR RG174 Cable, SMA Male / 90° Male, 1.5 ft
- CC174S-2.5HR RG174 Cable, SMA Male / 90° Male, 2.5 ft
- CC174S-5HR RG174 Cable, SMA Male / 90° Male, 5.0 ft

RG174/U - 50 Ohm Coaxial Cables with Two Right Angle SMA Plugs and Molded Strain Relief Boots

- CC174S-05HR2 RG174 Cable, SMA 90° Male / 90° Male, 0.5 ft
- CC174S-1HR2 RG174 Cable, SMA 90° Male / 90° Male, 1.0 ft
- CC174S-1.5HR2 RG174 Cable, SMA 90° Male / 90° Male, 1.5 ft
- CC174S-2.5HR2 RG174 Cable, SMA 90° Male / 90° Male, 2.5 ft
- CC174S-5HR2 RG174 Cable, SMA 90° Male / 90° Male, 5.0 ft

RG174/U - 50 Ohm Coaxial Cables with Inline SMA to Inline BNC Plugs and Molded Strain Relief Boots

- CC174SB-05 RG174 Cable, SMA Male / BNC Male, 0.5 ft
- CC174SB-1 RG174 Cable, SMA Male / BNC Male, 1.0 ft
- CC174SB-1.5 RG174 Cable, SMA Male / BNC Male, 1.5 ft
- CC174SB-2.5 RG174 Cable, SMA Male / BNC Male, 2.5 ft
- CC174SB-5 RG174 Cable, SMA Male / BNC Male, 5.0 ft
- CC174SB-7.5 RG174 Cable, SMA Male / BNC Male, 7.5 ft
- CC174SB-10 RG174 Cable, SMA Male / BNC Male, 10.0 ft

RG174/U - 50 Ohm Coaxial Cables with Two Inline BNC Plugs and Molded Strain Relief Boots

- CC174-1 RG174 Cable, BNC Male / Male, 1.0 ft
- CC174-1.5 RG174 Cable, BNC Male / Male, 1.5 ft
- CC174-2 RG174 Cable, BNC Male / Male, 2.0 ft
- CC174-2.5 RG174 Cable, BNC Male / Male, 2.5 ft
- CC174-3 RG174 Cable, BNC Male / Male, 3.0 ft
- CC174-4 RG174 Cable, BNC Male / Male, 4.0 ft
- CC174-5 RG174 Cable, BNC Male / Male, 5.0 ft
- CC174-7.5 RG174 Cable, BNC Male / Male, 7.5 ft
- CC174-10 RG174 Cable, BNC Male / Male, 10.0 ft
- CC174-12 RG174 Cable, BNC Male / Male, 12.0 ft
- CC174-15 RG174 Cable, BNC Male / Male, 15.0 ft
- CC174-25 RG174 Cable, BNC Male / Male, 25.0 ft

Did you know...

50 Ohm coaxial cables are primarily used with RF antennas and in older Ethernet networks?